



**CAPITAL REGION**<sup>™</sup>

**WATER**

## **Stormwater Inlets: The Acceleration of O&M Activities in Harrisburg's Sewer Collection System**

August 23, 2017

### **Regulatory Mandates**

---

- **The Partial Consent Decree became the primary driver to:**
  - Fix broken infrastructure by developing a Remedial Maintenance and Repair Program
  - Reduce pollution by revising protocols
  - Reduce basement backups and street flooding by revising protocols to outline hot spot procedures
  - Updated sinkhole/line collapse remedial procedures



**CAPITAL REGION.** | **WATER**

## Inherited Assets

- 178 Miles of Sewer Pipes
  - 14 Miles of Interceptor Pipes
  - 124 Miles of Collection System Pipes
  - 40 Miles of Separate Stormwater Pipes
- 3,100 Manholes
- 4,200 Storm Drains

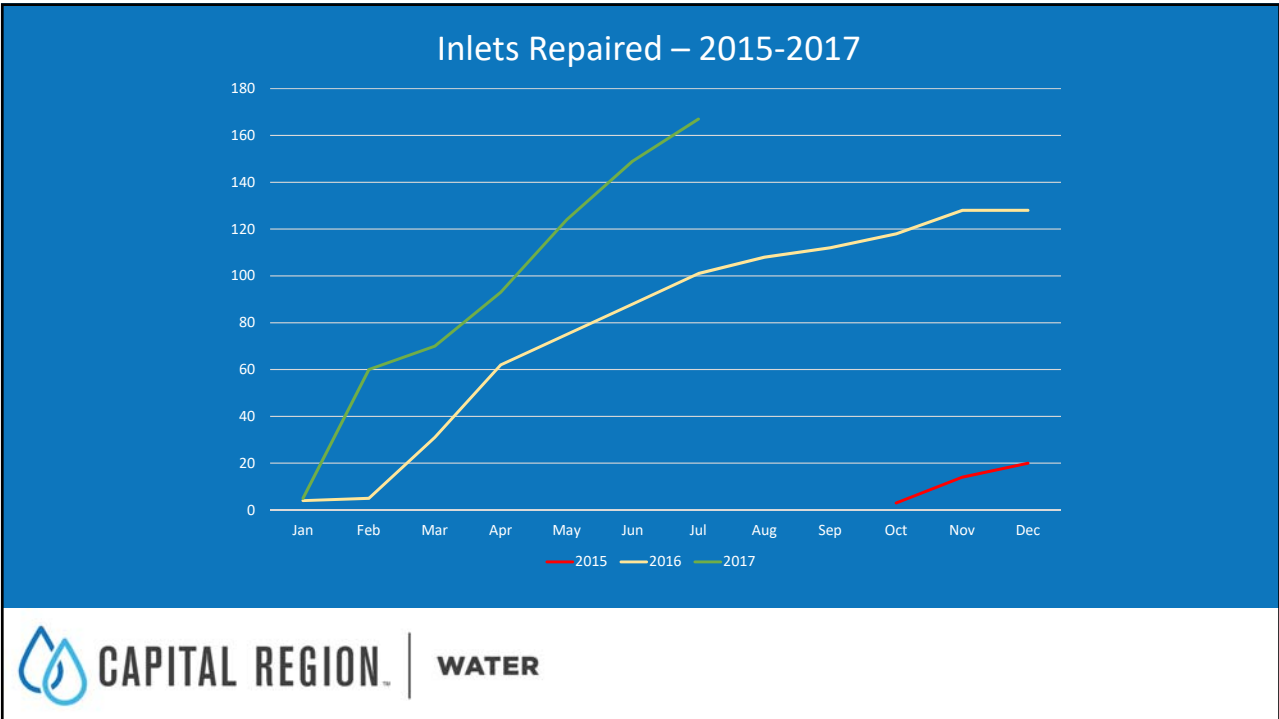
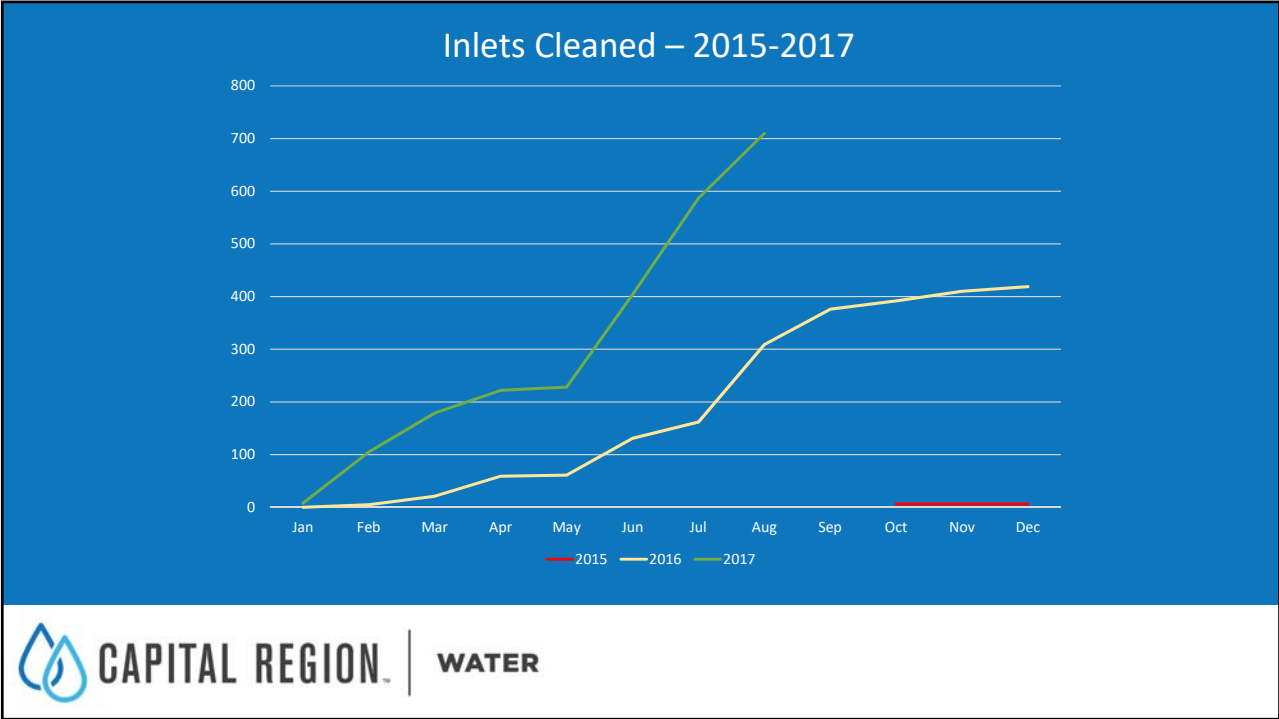


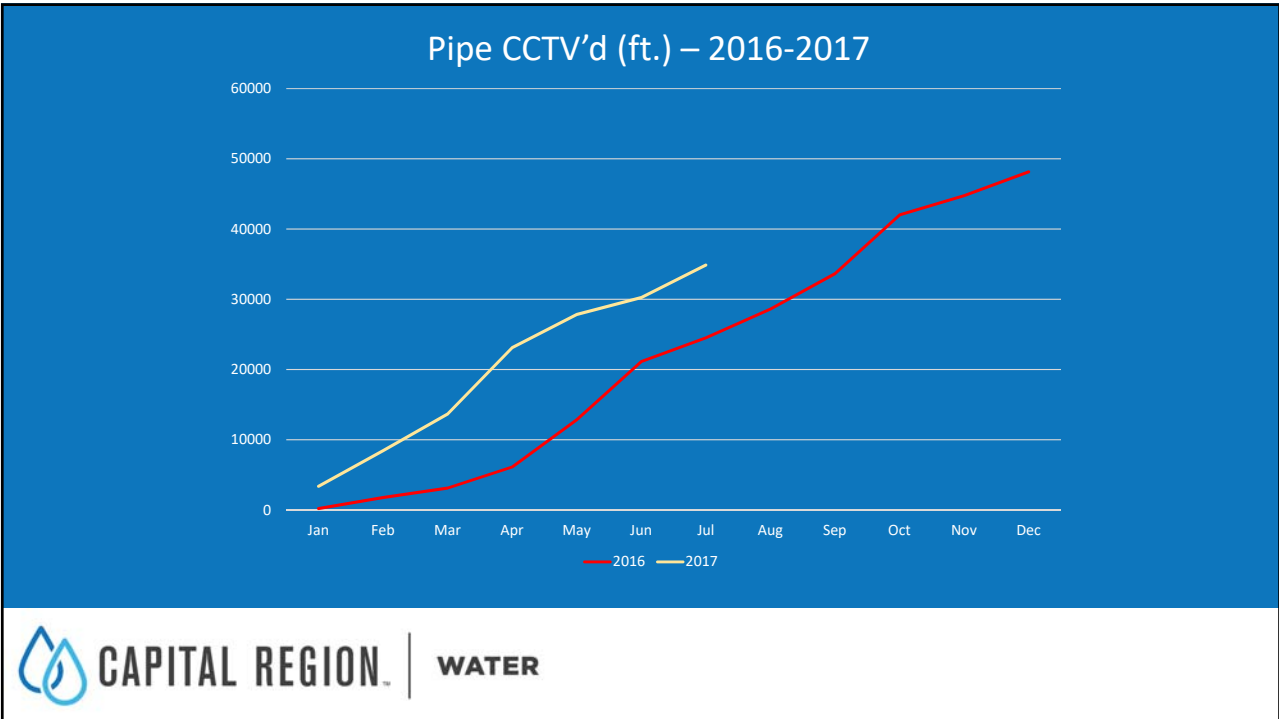
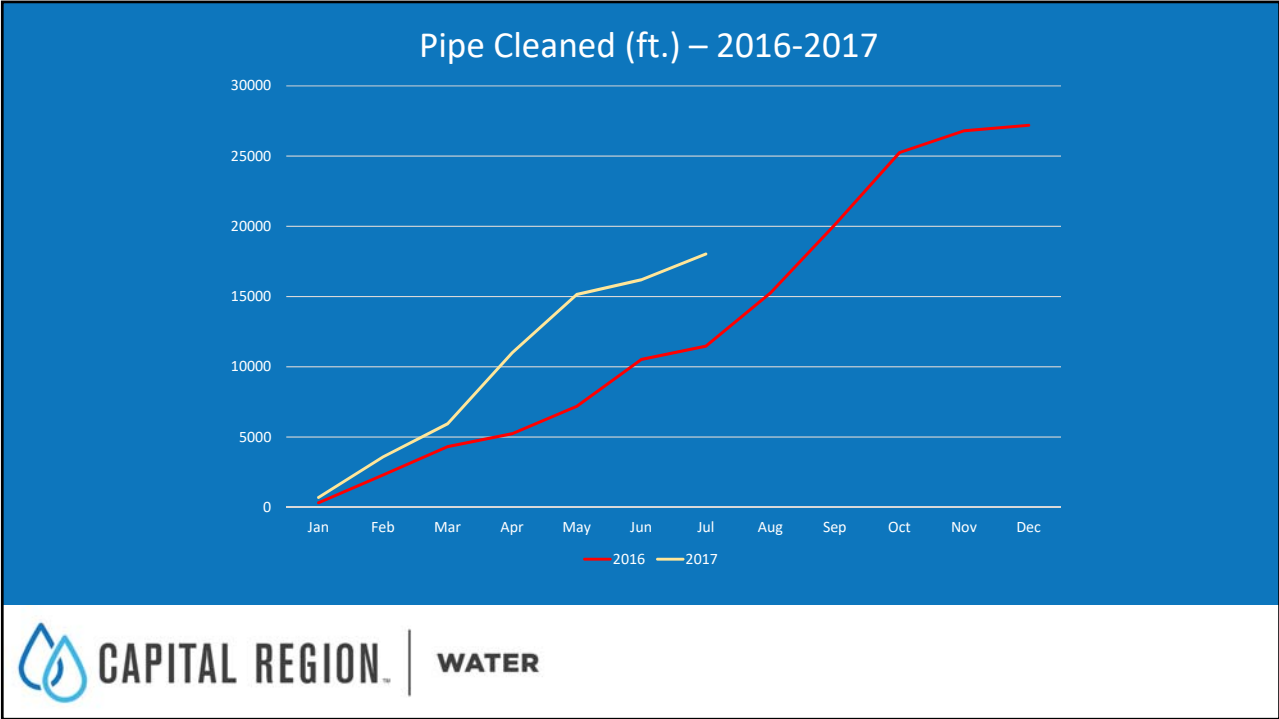
## Wastewater - Field Staffing Levels

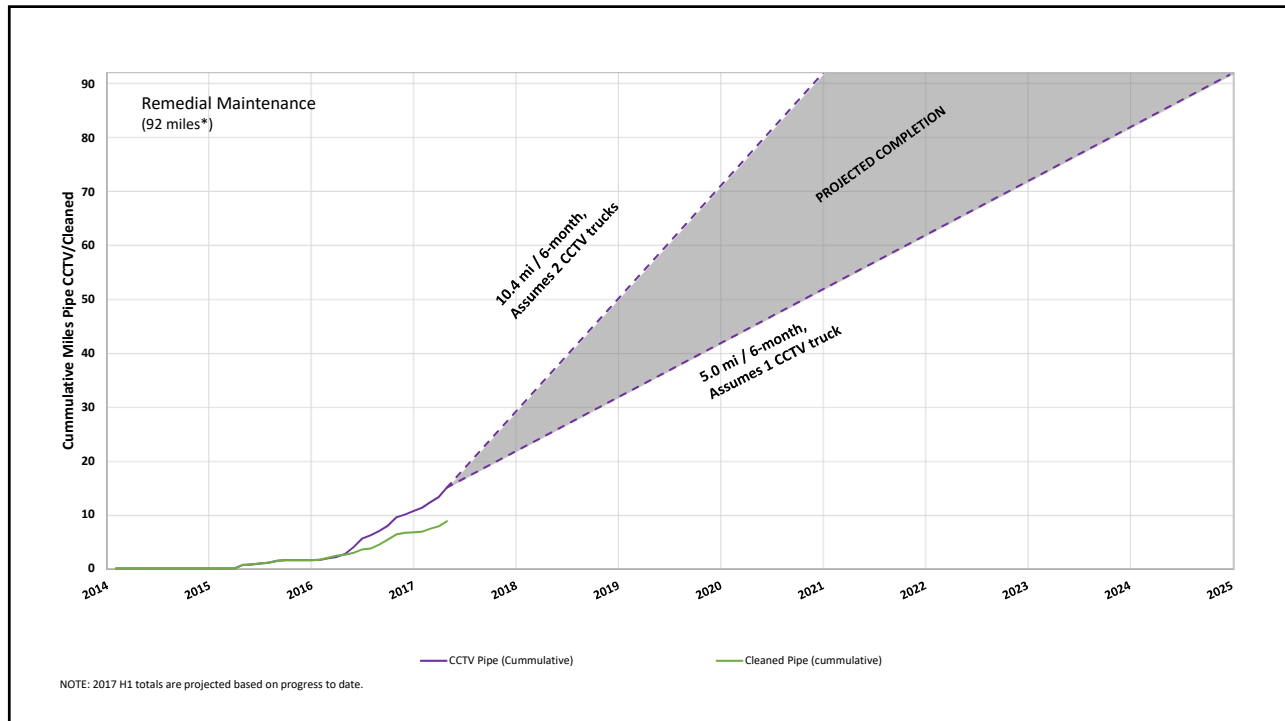
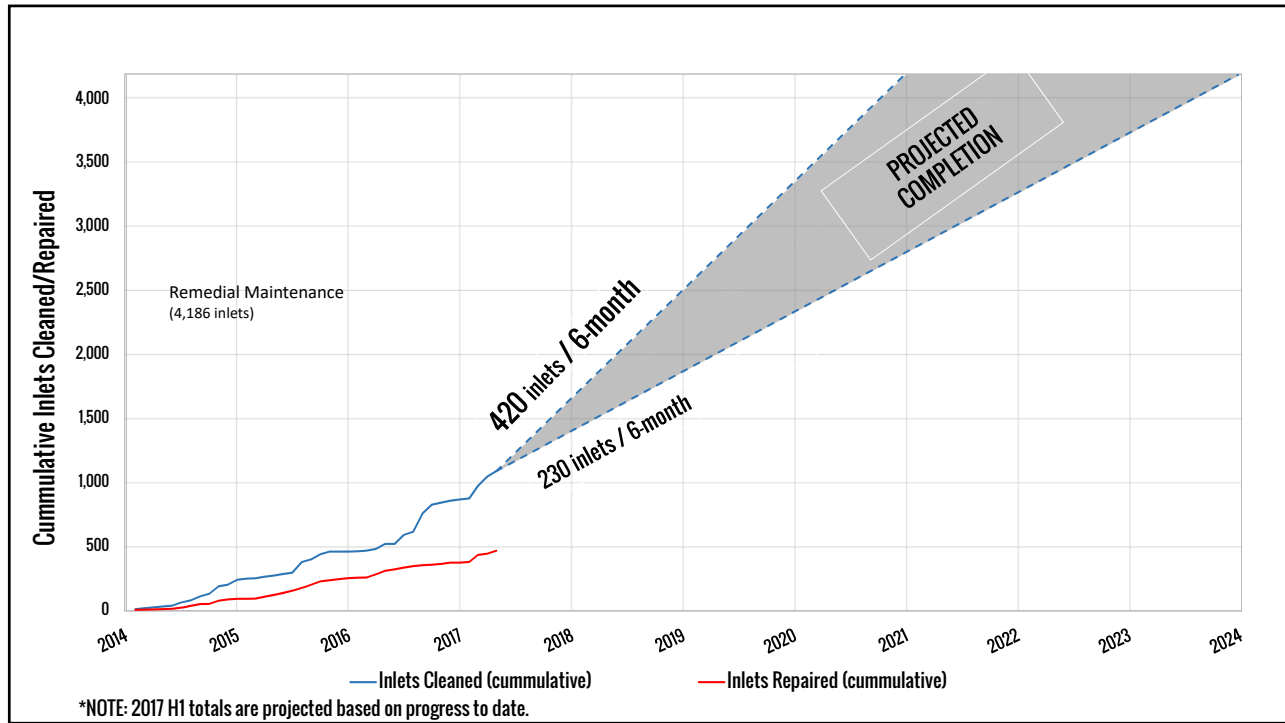
Year	Field Maintenance	Field Operations	Total FTEs
2013	4		4
2014	6		6
2015	8		8
2016	5	7	12
2017	7	7	14

\*Added Field Operations Supervisor in April 2016 and split the group into two units.









## Obstacles We Face

---

- Equipment to outfit the growing department
  - Long lead times on major equipment like Vector and Camera Trucks
  - Tools, PPE and standard work vehicles
  - Training to acclimate to complicated computer programs like Cityworks and CCTV software
- The additional workforce has exceeded the capacity of AWTF facilities
  - Lack of office space
  - Locker rooms are full
  - Employee parking



## Obstacles We Face (cont.)

---

- Recruitment
  - Employees with relevant experience have been difficult to attract
  - CDL and PADEP Class E, Subclass 4 Licensure required for advancement
  - K2Career Pipeline and our involvement with the Environmental Teen Corp., Thaddeus Stevens College, and the HACC Operator Certification Program will be critical moving forward



## Future Transition

---

Staffing and equipment requirements will continue to evolve as we transition from a *reactive* mode of maintenance to a *proactive* mode

## Questions/Comments